



XIAMEN STICK INDUSTRY CO.,LTD

Company Introduction

Xiamen Stick Industry Co., LTD. Knows your needs about quality and delivery.

Conveniently located in the south of China, our ISO 9001-2000 Certified facility economically services markets throughout the world including USA, Russia, Canada, Mexico, Brazil, Germany, Spain, Italy, Poland etc

We have various specialized factories and professional engineers to offer you excellent quality and strict product quality control with competitive prices.

From concept to final production, from mechanical and electronic design to components sourcing, and from prototype manufacturing to mold design, our engineer team can jump in at any stage to complete your valuable project on time.

Our service include: Plastics, Metal parts, Prototyping, Mould Export, Aluminum/Zinc Die casting, CNC Machining, Sheet Metal Forming, Aluminum/Plastic Extrusion, Buffering/Polishing, Surface Treatments, Assembly.

At Stick Industry, we manufacture around the clock using highly skilled and experienced technicians. We use a variety of shift patterns to ensure the flexibility to turn round fast track orders and allow a large output of components.

Customer's drawings or samples are welcomed for prompt quotation.

R&D Capacity

Our design team have rich experience of communicating with customers from Europe and USA for many years, so that we always know the customer's requests well. With our CAD and 3D system, we can provide CAD or 3D drawings according to the client's samples. We also have applied software for specification drawings: Pro/E, Auto CAD, Solid Work 2001, CAXA, UG. Experienced engineers will develop and design drawings and samples according to the client's detailed requirements, until finally confirmed. We can design and develop moulds/tooling for your OEM orders.

QA/QC Introduction

We have our in-house quality control with the department of 10 staff. Procedure to be IQC, PQC, FQC

In order to ensure the good quality and on-time delivery, we set up many different files from the beginning of the production to the final step until the customers receive their products.

- 1) In-process Report: Based on week. So that the customers know the processing for his project well.
- 2) FAI: Prepared before production of each order
- 3) Process Failure Mode and Effects Analysis
- 4) Out-going Report

Using the ISO9001 quality system, we carry out strict quality assurance on any product throughout the whole production before shipping and handling.

OEM order procedures:

- 1) Examine and confirm the drawings
- 2) Prototype for confirmation
- 3) Work out processing and production procedures
- 4) Carry out necessary technical support
- 5) Outsource raw material inspection
- 6) Semi-products inspection
- 7) Finished product inspection
- 8) Package inspection
- 9) Inspection before shipping
- 10) After-sales service and feedback



We make sure that any unqualified raw material, semi-finished product and finished product will not flow into the next procedure and not ship to our valued customers until clear of all defects. Our target is to supply "worry-free" products to our valued customers.

MACHINE EQUIPMENT LIST

| EQUIPMENT | TYPE | CAPACITY | QTY |
|-----------------------|-----------------------------------|----------------------------|---------|
| FOR DIE CASTING | HOT CHAMBER DIE CASTING MACHINE | 88 TONS | 2 SETS |
| | HOT CHAMBER DIE CASTING MACHINE | 160 TONS | 2 SETS |
| | HOT CHAMBER DIE CASTING MACHINE | 200 TONS | 1 SET |
| | HOT CHAMBER DIE CASTING MACHINE | 280 TONS | 1 SET |
| | COLD CHAMBER DIE CASTING MACHINE | 125 TONS | 2 SETS |
| | COLD CHAMBER DIE CASTING MACHINE | 250 TONS | 2 SETS |
| | COLD CHAMBER DIE CASTING MACHINE | 350 TONS | 2 SETS |
| | COLD CHAMBER DIE CASTING MACHINE | 650 TONS | 1 SET |
| | GRAVITY MACHINE | 750mm*630mm | 3 SETS |
| FOR INJECTION MOLDING | PLASTIC INJECTION MOLDING MACHINE | 80 TONS | 4 SETS |
| | PLASTIC INJECTION MOLDING MACHINE | 128 TONS | 3 SETS |
| | PLASTIC INJECTION MOLDING MACHINE | 160 TONS | 4 SETS |
| | PLASTIC INJECTION MOLDING MACHINE | 250 TONS | 4 SETS |
| | PLASTIC INJECTION MOLDING MACHINE | 360 TONS | 2 SETS |
| | PLASTIC INJECTION MOLDING MACHINE | 600 TONS | 1SET |
| | PLASTIC INJECTION MOLDING MACHINE | 850 TONS | 2 SETS |
| FOR TOOLING | CNC MACHINE CENTER | 1100mm*500mm*650mm | 3 SETS |
| | MILLING MACHINE | 700mm*300mm*400mm | 5 SETS |
| | GRINDING MACHINE | 580mm*400mm*580mm | 2 SETS |
| | WIRE CUTTING MACHINE | | 2 SETS |
| | ELECTRICAL DISCHARGE MACHINE | 450mm*350mm*350mm | 4 SETS |
| | LATHE MACHINE | ψ420mm*1100mm | 2 SETS |
| FOR METAL PARTS | LATHE MACHINE | ψ420mm*1100mm | 5 SETS |
| | CNC LATHE MACHINE | 180mm*530mm | 20 SETS |
| | CNC MILLING MACHINE | 1020mm*300mm*450mm | 5 SETS |
| | AUTO LATHE MACHINE | | 20 SETS |
| | METAL STAMPING MACHINE | 15 -160 TONS | 30 SETS |
| | HYDRAULIC PRESSURE MACHINE | 250-350 TONS | 5 SETS |
| | WELDING MACHINE | | 2 SETS |
| | BENDING MACHINE | | 5 SETS |
| FOR SURFACE TREATMENT | SANDBLASTING MACHINE | | 2 SETS |
| | POLISHING MACHINE | | 30 SETS |
| | CHROME PLATING LINE | NICKLE,CHROME(MATT/BRIGHT) | 5 LINES |
| FOR INSPECTION | OPTICAL MEASURING PROECTOR | 20 TIMES | 1 SET |
| | HARDNESS TESTING MACHINE | | 1 SET |
| | SURFACE ROUGHNESS TESTER | ψ300mm | 1 SET |
| | SALT SPRAY TESTER | 600mm*400mm*450mm | 1 SET |
| | PLATING THICKNESS TESTER | 0.006 ~ 300£gm | 1 SET |

Aluminum Die Casting Solution

Aluminum die casting alloys are lightweight while possessing high dimensional stability for complex shapes and thin walls. Aluminum has good corrosion resistance and mechanical properties, high thermal and electrical conductivity, as well as strength at high temperatures.



Production Capability

- Automated equipment can handle high volume casting jobs of up to 100,000 pieces per week
- Manual machines for low volume jobs of as little as 500 pieces per year
- Can cast from 0.02 to 10kgs
- Most aluminum die casting alloys are offered such as ADC10, ADC12, A380, 383, B390 (YL117), YL112, YL104
- 10 die casting and gravity casting lines, each with an individual aluminum furnace - this allows us to cast multiple alloys each day
- Aluminum Gravity casting in house
- Custom die-trimming of parts
- Specialized process controls for parts that require unusual aesthetic or quality demands



Molds Created On-Site

In addition to die-casting, Stick Industry is a full-service mold manufacturing facility offering in-house tooling design and production. Where most die-casting facilities only offer mold repair, Stick Industry can create a custom mold on-site, and then simply transfer that mold to the die-casting area.

Stick Industry is capable of handling a wide range of tooling and part data, from the latest 3-D solid models, to simple sketches, to building tooling from a sample part. Plus, we use the most modern multi-axis CNC machine tools for optimum precision and accuracy in tooling.

State-of-the-Art Cast Finishing



The STK facility offers a complete in-house, independent machining facility with the latest CNC mills and lathes to provide fully machined castings. Our sanding and surface finishing capabilities include:

- Shot blasting
- Parting line removal
- Chrome Plating
- Powder coating
- Painting
- Anodizing

All of these are available at STK, your one-stop shop for aluminum die casting needs.

Zinc Die Casting Solution

For the manufacture of your zinc die casting parts requirements, Stick Industry offers the cost-saving advantage. STK produces both big and small precision \ zinc die cast components for a wide variety of market applications - including lock hardware, fiber optic hardware, computer components and more.

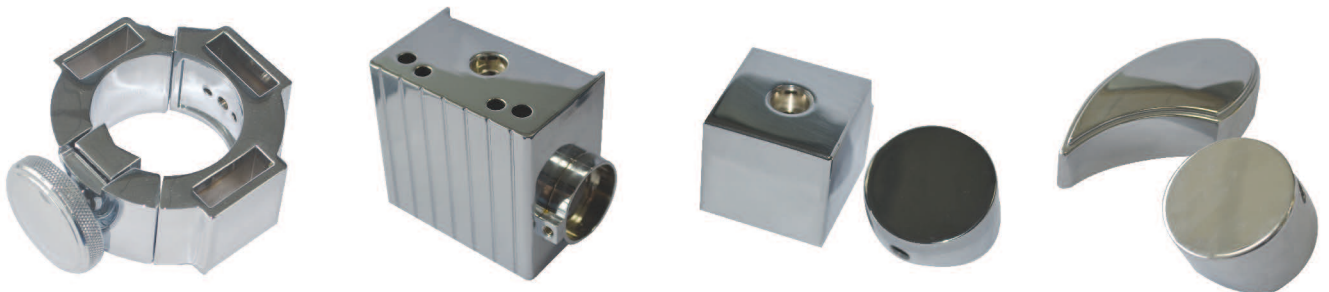
STK's advanced zinc die casting process offers a versatile production capability that is both dependable and cost effective. Intricate shapes with thin wall sections, smooth finish, high yield strength and impact resistance with high dimensional accuracy are fully within STK's manufacturing abilities.

At STK, all zinc die casting tooling is designed and built in-house to meet both the customer's and STK's own exacting standards. Production processes for each project are carefully planned, documented and monitored utilizing various statistical process control techniques.



Specific Zinc Die Casting Capabilities

- Automated equipment can handle high volume casting jobs of up to 100,000 pieces per week
- Manual machines for low volume jobs of as little as 500 pieces per year
- Can cast from 0.02 to 5kgs
- Single to Multiple Cavities
- 6 Sets of hot chamber die casting machines range from 88 tons to 280 Tons
- Most zinc die casting alloys are offered such as Zamak 2, Zamak 3, Zamak 5, Zamak 7, ZA8, ZA27 etc
- Specializing in Small, Big, Complex, Precision components



State-of-the-Art Cast Finishing

The STK facility offers a complete in-house, independent machining facility with the latest CNC mills and lathes to provide fully machined castings. Our sanding and surface finishing capabilities include:

- Shot blasting
- Parting line removal
- Chrome Plating
- Nickle Plating
- Zinc Plating
- Powder coating
- Painting
- PVD



Plastic Injection Solution

Why Choose Us?

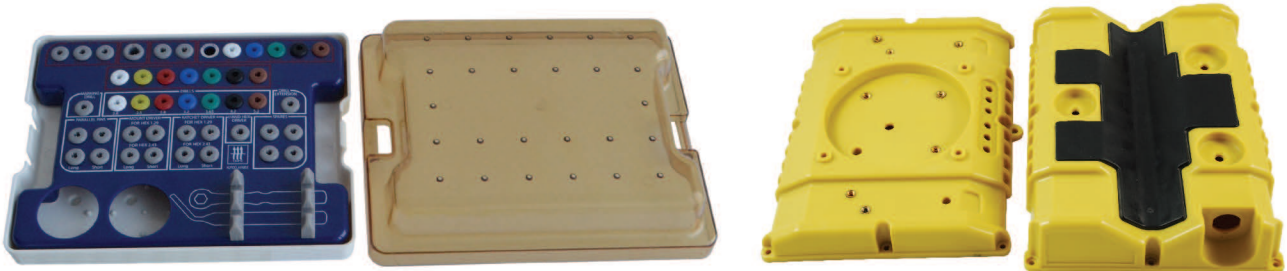
Broad-based expertise, full-service capabilities and a track record for solving complex challenges sets Xiamen Stick Industry in a highly competitive marketplace. We provide services to help with product design, material selection, and CAD/CAM/CAE capabilities including Solid Works (TM) and mold flow analysis along with product assembly, decorating and plastic welding.

- Design Consultation and Assistance
- CAD/CAM/CAE including Solid Works (TM) and mold flow analysis
- Material Selection Assistance
- In house or outsource Tooling
- Plastic Decorating: In-Mold Decorating (in-mold labeling), pad printing and hot stamping
- Secondary Operations including machining, welding and assembly
- Zero-defect tool DFM approach
- Quick turn-around prototype support



Production Capability

Our main production area is equipped with 20 moulding machines of various sizes, ranging from 80 tons to 850tons clamping pressure. This provides us with the capability to mould shot weights from 0.1 gram to over 3000 grams with flexible production runs.



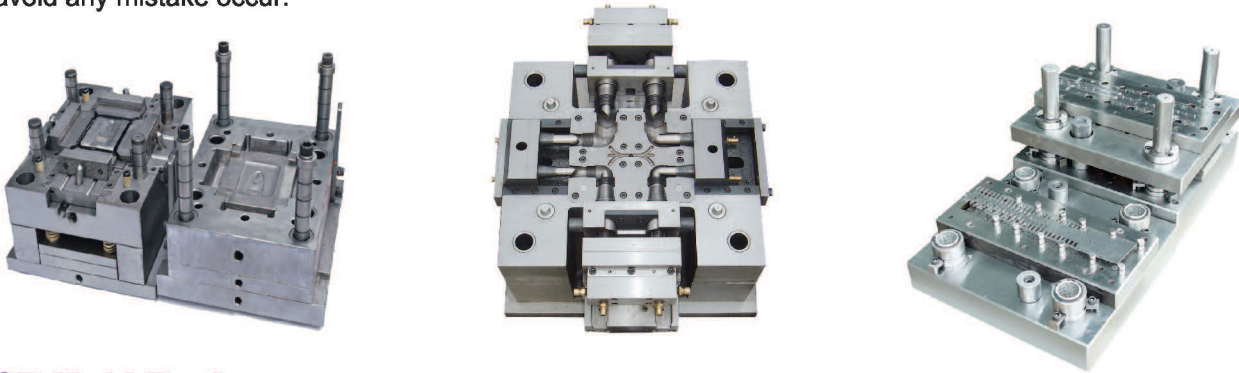
| | | |
|--------------------|----------|---|
| Materials Applied: | PP | Automotive(bumpers, covers, trim), bottles, caps, crates, handles, housings |
| | POM | Bearings, cams, gears, handles, plumbing components, rollers, rotors, slide guides, valves |
| | PC | Automotive (panels, lenses, consoles), bottles, containers, housings, light covers, reflectors, safety helmets and shields |
| | PES | Valves |
| | ABS | Automotive (consoles, panels, trim, vents), boxes, gauges, housings, inhalors, toys |
| | PA6 | Bearings, bushings, gears, rollers, wheels |
| | PA6/6 | Handles, levers, small housings, zip ties |
| | PBT, PET | Automotive (filters, handles, pumps), bearings, cams, electrical components (connectors, sensors), gears, housings, rollers, switches, valves |
| | PVC | Electrical insulation, housewares, medical tubing, shoe soles, toys |
| | HDPE | Chair seats, housings, covers, and containers |
| | PMMA | Display stands, knobs, lenses, light housings, panels, reflectors, signs, shelves, trays |



Mould Design and export Solution

Over the years, STK has designed hundreds of different plastic parts and metal parts. Whether you require a basic mold or a complex mold, we have the skills and experience to design your mold accurately and on time.

STK use Pro-E, Solidworks, U.G., and Auto-CAD for moulds and plastic parts design, with very strong mould design and drawing reading ability. This ensures the good technical communications with clients, which can avoid any mistake occur.



3D Mold Design

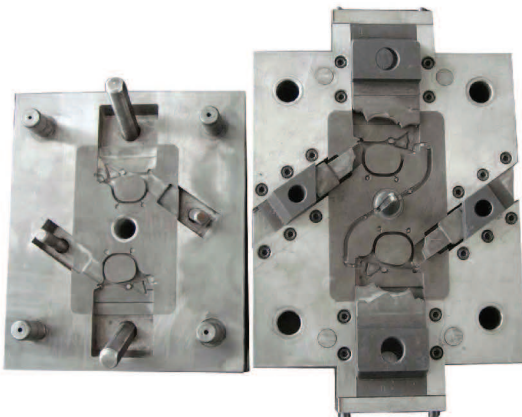
We offer extensive 3D mold design services ranging from simple parting line splits to full 3D mold assemblies using Unigraphics software. Our 3D mold design models include all the parting lines, rounds, fillets and drafts.

We deliver 3D Mold Designs and individual component models of cores, cavities, slide faces, and EDM electrodes to mold makers for CNC programming. By creating mold components as 3D solid models, CNC cutter path can be programmed directly from the resulting geometry using Unigraphics. 2-D references and detail drawings are finalized in Unigraphics or exported to a variety of other CAD packages.

Our engineering staff will work with you to develop the mold you need using three-dimensional modeling and state-of-the-art technology to ensure a precise result.

The following is a partial list of current mold steels and components used by STK. At the same time, we can design mold according to customer's requirement.

718,718H,S136,S136H,420ESR from ASSAB of Sweden.P20,P20+S,P20+Ni,420,H13,01 from LKM.NAK80 from DAIDO of Japan.Most mold bases and standard components come from LKM, DME, HASCO.



| | |
|---------------|--|
| Our Advantage | <ul style="list-style-type: none"> • In-house mold design and mold manufacturing • Precision single and multi-cavity molds • Rapid prototype to high volume molds • Design for manufacturability • Fast turnaround |
| Flow Chart | <ol style="list-style-type: none"> 1. Drawing design 2. Drawing discussion 3. Mock-up assembly testing 4. Mold structure design 5. Mechanism confirmation 6. Processing 7. Mold assembly testing 8. Sample examination 9. Mold modification 10. Quality confirmation 11. Delivery |

Rubber Moulding Solution

STK specializes in designing and manufacturing o-rings, seals and rubber parts to serve most industrial markets, especially in automotive, electrical appliances and petrochemical valves & pumps industries etc.

With support from responsive customer service, expertise engineer and R&D teams, company aims to export high-quality products to the global market. From customer-oriented and technology-oriented stand points, we offer the part of high standard focusing on reliability, services and meeting our customer needs.

| | |
|--------------------|---|
| Materials: | Natural rubber, silicone, Viton, EPDM, Nitrile, Neoprene, HNBR, NBR+PVC, SBR, IR, IIR (butyl rubber), CR (neoprene), SBR, AU, ACM. |
| Surface Treatment: | Color painting, silk-printing, Laser etching, texture and more are available |
| Applied Industry: | automotive, electrical, building, furniture, machine assembly, computer components, air industry |
| Service Provided: | Rubber Injection Molding Rubber Transfer Molding Rubber Compression Molding Rubber to Metal Molding Custom Rubber Molding Engineering and Design Support |



Brief Introduction to Raw Material

Viton® fluoroelastomer compounds from DuPont Dow Elastomers' Viton® with exceptional chemical oil and mechanical properties for various kind of fluid and fuel restraint with service temperatures range from -60°C to 200°C.

Silicone , serve in electronic, automotive, electric industries with various hardness and service temperature range from -80°C to 200°C.

NBR has its good balance of oil resistance, low compression set high tensile strength and cost. EPDM has its good weathering properties, low compression set. EPDM, o-ring and seals last longer in aqueous solution and steam.

HNBR , o-ring and seals have excellent properties to the oil and sour gas with service temperature of -10°C to 200°C.



Rapid Prototyping solution

Rapid Prototyping (RP) enables the quick fabrication of physical models using three-dimensional computer aided design (CAD) data. Used in a wide range of industries, Rapid prototyping allows companies to turn innovative ideas into successful end products rapidly and efficiently.



Why Choose Us?

STK understands that our customers need their prototypes – rapidly – and so we make every effort to ensure a timely delivery of quality prototypes to help your product design cycle.



Prototyping Capability

- CNC Precision Machined Parts Manufactured to Customer Specification
- Experience Using a Wide Range of Materials Including Plastic, Aluminum, Brass and Stainless Steels
- Design and Manufacture of Jigs and Fixtures
- Fast Turnaround Prototype Service



Application for Prototyping:

- Concept modeling – The freedom of multiple design iterations without cost penalty
- Form, fit and function testing – STK prototypes help engineers and designers determine form, fit and function before investing in tooling
- Design verification – Test your new products on the market and ensure that your design is right before going to mass production
- Masters – You can use STK prototypes as masters for vacuum forming, investment casting and many other methods
- Marketing tools – Need to show your new concept to create a buzz? Build a STK prototype. You can paint it, plate it or just simply show it.
- Production mockups – Get a highly accurate and functional prototype to ensure that your design is correct before investing in production

CNC Machining

We offer a complete range of machining and various type of manufacturing capabilities. It is our fervent commitment to produce parts with zero defects . Our ability to integrate a wide range of metal - based components and assemblies for suspension greatly expands our combination of cost effective and mass production reliability.

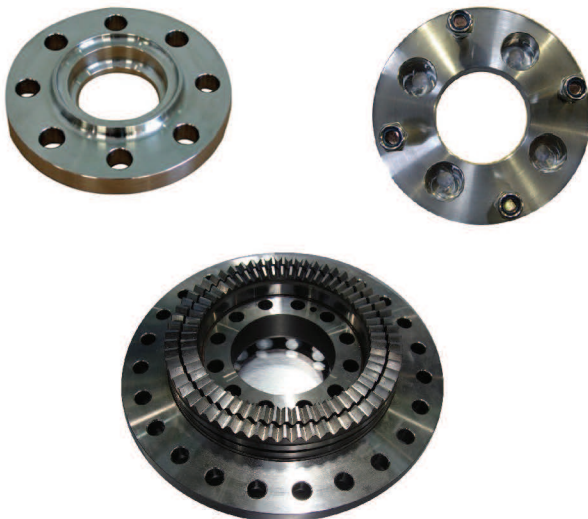


Equipments List

- CNC lathe
- Grinder(Centerless / Surface)
- CNC Multi-Tasking Turn / Mill Center
- CNC Machining Center
- Wire Cutting
- Lapping, Polishing, Blast, Ultrasonic Cleaner Line



STK's experience extends through the use of steel, aluminum, titanium, nickel alloys and plastic. Our products are widely used as below



- Automotive Parts
- Connector Parts
- Medical Equipments Parts
- Photoelectric components
- Analysis equipment Parts
- Oil and Gas Exploration Equipments
- Precision Pumps Parts
- Aerospace Parts

Metal Stamping Solution

With our advanced precision metal stamping capabilities, We can handle even the toughest of manufacturing challenges with our precision solutions!

Look to STK for your short to medium-run stamping requirements. We offer CNC Turret Punch Presses for low volume and prototype orders. STK specializes in short-run transfer tooling built in-house, and we also build and run progressive dies for your higher volume metal stamping needs.

STK's Metal Stamping capabilities cover a wide range of sheet metal materials. STK handles stainless steel metal stampings, aluminum stampings, cold rolled steel metal stampings and deep drawn metal parts.



Full Service Metal Stamping and Metal Fabrications

Our full-service metal stamping & metal fabrications jobshop truly offers a full spectrum of metal stamping options. We have small punch presses for small precision metal stamping. Our large punch presses are for more complex metal stamping services. For deburring and cleaning we have excellent equipment so that your parts will be burr-free after metal stamping applications. Our metal stamping facility also holds stock reels, shears and small and large press brakes.

Our metal stamping professionals are trained extensively in the metal stamping industry. The combined experience of our metal stamping professionals ensures that we can complete stampings in almost any industry.



- The technics & capabilities: Punching, cutting, bending / flexing / curving, pressing, forming, welding / bonding, riveting, grinding edge, lettering, components Assembly.
- Materials: Aluminum, copper/ brass, stainless steel, carbon steel, Mild steel, cold roll steel, etc.
- Finish treating: Anodizing, hard anodizing, electroplating of chrome/zinc/nickel plated, tinning, copperize, Colour spray-painting, blackening, hot-dip galvanizing, tephlon plating, etc.

